



MC3200 Series

EMC Configuration and Accessories Guide

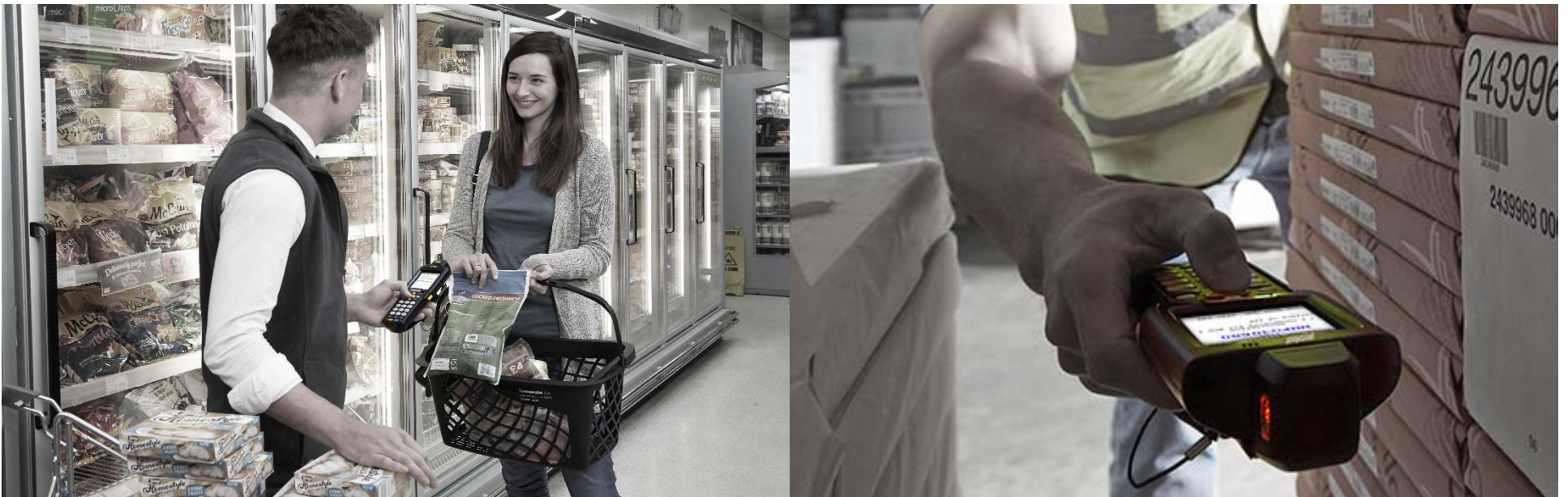
*Designed to assist customers and partners with model and
configuration guidance*



Contents

I. MC3200 Series Configuration Guide

II. MC3200 Series Accessories



MC3200 Configuration Guide





MC3200 Series

CONFIGURATION & ACCESSORY GUIDES are available on [The Source](#) and [PartnerCentral](#)

For access to additional product information including this guide, please visit: www.zebra.com/mc3200

- All MC3200 configurations are compatible and backward compatible with all existing accessories including: Cradles, Holsters and Cables.

Find Product Information in the **EMC Product Portfolio** on [The Source](#) and [PartnerCentral](#)

MC3200 Third party accessories:

- www.atpinc.com
- www.portsmith.com



MC3200 Configuration Matrix

CONFIGURATION OPTIONS:	MC31XX	OPTION	DESCRIPTION
Radio Option	MC32N-xxxxxxxx	N	WLAN 802.11 a/b/g/n
WAN	MC32x0-xxxxxxxx	0	None
Form Factor	MC32xx-R-xxxxxxx	R	Rotating (Turret) Head
	MC32xx-S-xxxxxxx	S	Straight Shooter
	MC32xx-G-xxxxxxx	G	Gun
Data Capture options (Scanner)	MC32xx-xL-xxxxxxx	L	SE965 1D Standard Range Scan Engine
	MC32xx-xI-xxxxxxx	I	SE4750 Standard Range Array Imager
	MC32xx-xF-xxxxxxx	F	SE4750 Medium Range
Keyboard Options	MC32xx-xx2-xxxxxxx	2	28 Key Numeric Keypad
	MC32xx-xx3-xxxxxxx	3	38 Key Shifted Alpha Keypad
	MC32xx-xx4-xxxxxxx	4	48 Key Alpha Numeric Keypad
Battery Options	MC32xx-RxxS-xxxxx	S	Standard capacity 2740mAH (only with Rotating Head)
	MC32xx-xxxH-xxxxx	H	High capacity 4800mAH
Operating System options	MC32xx-xxxxC-xxxx	C	Microsoft Windows CE 7.0
	MC32xx-xxxxA-xxxx	A	Android 4.1 Jelly Bean with Mx (only in Premium Model)
Memory Options	MC32xx-xxxxxL-xxx	L	512 MB RAM / 2 GB Flash (Standard Model)
	MC32xx-xxxxxH-xxx	H	1 GB RAM / 4 GB Flash (Premium Model only)
Operating System Language	MC32xx-xxxxxxX-xx	E,C,J,K	English, Simplified Chinese, Japanese, Korean
Additional Features	MC32xx-xxxxxxx0-x	0	None
	MC32xx-xxxxxxxI-x	I	Interactive Sensing Technology (IST) (Only in Premium Models)
Country or Custom Code	MC32x-xxxxxxxA	A	World Wide ROHS
	MC32xx-xxxxxxxTN	TN	Tunisia



MC3200 Configurations Available



MC3200 Variants

Standard

Operating System

- Windows CE 7.0

Memory

- 512 MB RAM / 2 GB Flash

Form Factors

- Straight Shooter
- Rotating Head (Turret)
- Gun

Premium

Operating System

- Windows CE 7.0
- Android 4.1 Jelly Bean with Mx

Memory

- 1 GB RAM / 4 GB Flash

Form Factors

- Straight Shooter
- Rotating Head (Turret)
- Gun

Added features

- Interactive Sensor Technology (IST)

MC3200 Data Capture Methods

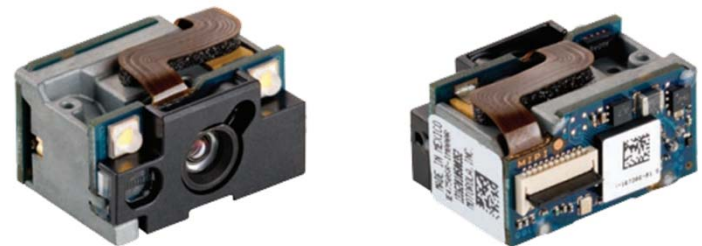
Scan Engines

SE965 1D Standard Range Scan Engine

SE4750 1D/2D Standard Range Array Imager



SE965
1D Standard Range Scan
Engine



SE4750
Standard Range Array
Imager

MC3200 Keypad Options

28 Key Numeric Telephony

Large numeric keys
 10 Shifted function keys
 Alpha characters by SMS style



38 Key Shifted Alpha

Calculator style numeric
 10 Direct function keys
 Shifted Alpha



48 Key Alpha-Numeric

Full alpha-numeric keypad
 13 Shifted function keys



MC3200 Operating Systems



Android 4.1 Jelly Bean



Microsoft Windows
Embedded Compact 7.0

Operating System Configurations

Android 4.1 Jelly Bean (Premium)

**Microsoft Windows Embedded
compact 7.0 (Standard or Premium)**

OS swap is only supported on Premium CE and Android Configurations. Devices must be sent to a service depot to perform the OS swap. !

MC3200

Accessories Guide



Step 1: Choosing a charging method



Single Slot Cradle:

CRD3000-1001RR Single slot USB / RS232 Cradle, w/spare battery charging. **Requires:** Power Supply PWR-BGA12V50W0WW, DC Line Cord CBL-DC-388A1-01 and Country Specific 3 wire AC Line Cord.

Single Slot Cradle Kits:

CRD3000-101RES (INTERNATIONAL) **Includes:** Single Slot Cradle CRD3000-1001RR Level VI Power Supply PWR-BGA12V50W0WW and DC Line Cord CBL-DC-388A1-01. Must purchase 3 wire AC Cord separately.

CRD3000-100RES (US) **Includes:** Single Slot Cradle CRD3000-1001RR, Level VI Power Supply PWR-BGA12V50W0WW, DC Line Cord CBL-DC-388A1-01, and US AC Cord 23844-00-00R.

The single slot cradle can charge all the MC31 configurations (straight shooter, rotating head and gun), charges a spare battery and has USB connection.

Additional Accessories for Single Slot Cradle



25-68596-01R

USB Cable for the cradle to the host system



25-63852-01R

Provides serial communication between the single slot cradle and a host computer.



PWR-BGA12V50W0WW

Level VI AC/DC Power Supply (Brick, replacement for PWRS-14000-148R)

AC Input: 100-240V, 2.4A

DC Output: 12V, 4.16A, 50W

Requires: DC line cord and Country specific grounded AC line cord.



CBL-DC-388A1-01

DC Line Cord for running the single slot cradles or battery chargers from a single Level VI power supply PWR-BGA12V50W0WW, Level VI replacement for PWRS-14000-148R.



23844-00-00R

US AC line cord, 7.5 feet long, grounded, three wire for power supplies.



25-63856-01R

Modem adapter cable used on the single slot cradle



Step 1: Choosing a charging method



4 Slot Cradles:

CHS3000-4001CR 4 Slot Charge Only Cradle

CRD3X01-4001ER 4 Slot Ethernet Cradle

4 Slot Cradle Kits:

CRD3000-400CES (US) Includes: 4 Slot Charge Only Cradle CHS3000-4001CR, Level VI Power Supply PWR-BGA12V108W0WW, DC Cord CBL-DC-381A1-01 and US AC Cord 23844-00-00R.

CRD3000-401CES (INTERNATIONAL) Includes: 4 Slot Charge Only Cradle CHS3000-4001CR, Level VI Power Supply PWR-BGA12V108W0WW and DC Cord CBL-DC-381A1-01. Must purchase 3 wire AC Cord separately.

CRD3X01-401EES (INTERNATIONAL) Includes: 4 Slot Ethernet Cradle CRD3X01-4001ER, Level VI Power Supply PWR-BGA12V108W0WW and DC Cord CBL-DC-381A1-01. Must purchase 3 wire AC Cord separately.

Additional Accessories for 4 slot Cradles



PWR-BGA12V108W0WW

Level VI AC/DC Power Supply (Brick, Replacement for PWR-S-14000-241R)

AC Input: 100-240V, 2.8A

DC Output: 12V, 9A, 108W

Requires: DC line cord and Country specific grounded AC line cord.



CBL-DC-381A1-01

DC Line Cord for running multi-slot cradles from a single Level VI power supply PWR-BGA12V108W0WW, Level VI replacement for PWR-S-14000-241R



23844-00-00R

US AC line cord, 7.5 feet long, grounded, three wire for power supplies.



KT-136648-01R

Wall mount bracket for 4 slot cradles.

Step 2: Choose battery / battery charging accessories

2470 mAh Battery



BTRY-MC32-01-01

Standard capacity battery, 2470 mAh

Pack of 10 spare batteries is also available: **(BTRY-MC32-01-10)**

5200 mAh Battery



BTRY-MC32-52MA-01

High-capacity battery, 5200 mAh

Pack of 10 spare batteries is also available: **(BTRY-MC32-52MA-10)**

4 Slot Battery Charger



SAC7X00-4000CR

4 Slot battery charger, for standard and high-capacity batteries.

Requires: Power Supply PWR-BGA12V50W0WW, DC Line Cord CBL-DC-388A1-01 and Country Specific 3 wire AC Line Cord.

SAC-MC32-400US-01

US kit. Includes: 4-slot battery charger SAC7X00-4000CR, battery adapters ADP-MC32-CUP0-04, Level VI Power Supply PWR-BGA12V50W0WW, DC Line Cord CBL-DC-388A1-01, and US AC Cord 23844-00-00R.

SAC-MC32-400INT-01

International kit. Includes: 4-slot battery charger SAC7X00-4000CR, battery adapters ADP-MC32-CUP0-04, Level VI Power Supply PWR-BGA12V50W0WW and DC Line Cord CBL-DC-388A1-01. Must purchase 3 wire AC Cord separately.

Accessories for battery charger:

PWR-BGA12V50W0WW

Level VI AC/DC Power Supply (Brick, replacement for PWRS-14000-148R)

AC Input: 100-240V, 2.4A

DC Output: 12V, 4.16A, 50W **Requires:** DC line cord and Country specific grounded AC line cord.



CBL-DC-388A1-01

DC Line Cord for running the single slot cradles or battery chargers from a single Level VI power supply PWR-BGA12V50W0WW, Level VI replacement for PWRS-14000-148R.



23844-00-00R

US AC line cord, 7.5 feet long, grounded, three wire for power supplies.



ADP-MC32-CUP0-04

Battery adapter cup for spare battery charger. (4-pack)



Step 3: Choose charging and communication cables

USB/Charge Cable



25-67868-03R

USB communication and charge cable, must purchase Power supply PWR-BUA5V16W0WW, DC Line Cord CBL-DC-383A1-01 and un-grounded AC line cord separately.

RS232/Charge Cable



25-67866-03R

RS232 communication and charge cable, must purchase Power supply PWR-BUA5V16W0WW, DC Line Cord CBL-DC-383A1-01 and un-grounded AC line cord separately.

Power Cable



25-70103-03R

Power only cable, must purchase Power supply PWR-BUA5V16W0WW, DC Line Cord CBL-DC-383A1-01 and un-grounded AC line cord separately.

Printer Cable



25-91513-01R

Printer cable, to be used with Zebra QL series.

Vehicle Charge Cable



VCA3000-01R

Auto charge cable (cigarette lighter) 12/24V

Step 4: Choose carrying accessories for straight shooter and rotating head devices

Fabric Holster



11-69293-01R

Fabric holster , includes shoulder strap. It can also be used with a belt. For rotating head and straight shooter configurations.

Plastic Holster



8710-050005-01R

Plastic holster, secures to a belt. For rotating head and straight shooter configurations.

Hand Strap



SG-MC3123244-01R

Spare hand strap for rotating head and straight shooter configurations (pkg 1).

**Shoulder strap
58-40000-007R**

Universal shoulder strap for holster.



**Belt for holster
11-08062-02R**

Universal belt for fabric holster.



Protective Boots



11-70899-04R

Protective boot for straight shooter configurations.



BOOTSCANTURRETR

Protective boot for rotating head configurations. Includes terminal boot (11-72097-04R) and turret cup (11-72096-04R).

Step 4: Choose carrying accessories for gun devices

Holster



SG-MC3021212-01R

Fabric holster, secures to a belt or a shoulder strap. For gun configurations.

Protective Boot

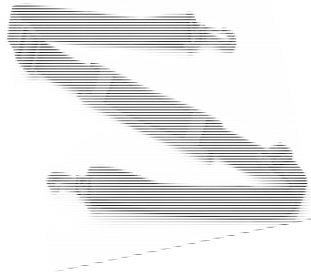


11-72959-04R

Protective boot for gun both imager and laser configurations.

Shoulder strap 58-40000-007R

Universal shoulder strap for holster.



Belt for holster 11-08062-02R

Universal belt for fabric holster.



Hand Strap



SG-MC3123242-01R

Spare hand strap for gun configurations (pkg 1)



SG-MC32-HDSTG-01

Spare handstrap for gun-configuration, No RFID tag, (pkg 3)

Step 5: Choose other accessories

Audio

- RCH51** Rugged wired headset designed for use in nearly any environment
- 25-124389-01R** RCH51 headset adapter cable to standard 3-pole 2.5mm barrel jack. For MC32XX models.
- 25-124411-03R** RCH51 headset adapter cable to standard 3-pole 2.5mm barrel jack. For MC32XX models



RCH51
Rugged Wired
Headset



25-124389-01R
Headset adapter



25-124411-03R
Headset adapter
cable

Stylus Kits

- 11-43912-03R** Tethered stylus for brick configurations- Pack of 3
- 11-43912-50R** Tethered stylus for brick configurations- Pack of 50
- KT-MC9X3X-STLSG-05** Spare stylus for gun configurations- Pack of 5
- KT-MC9X3X-STLSG-10** Spare stylus for gun configurations- Pack of 10
- KT-MC9X3X-STLSG-50** Spare stylus for gun configurations- Pack of 50



11-43912-03R
11-43912-50R
Replacement stylus for
brick configurations

KT-MC9X3X-STLSG-05
KT-MC9X3X-STLSG-10
KT-MC9X3X-STLSG-50
Replacement stylus for
gun configurations

